



# DC210-12 DEEP CYCLE

210AH @ 20Hr  
12-Volt

**Group Size: 4D**

Maintenance-Free  
Sealed AGM Battery

## CYCLING CAPACITY

20 Hour Rate **210 Amp Hours**

## RESERVE CAPACITY

Reserve @25 AMPS **400 Minutes**

Reserve @75 AMPS **105 Minutes**

## ELECTRICAL SPECIFICATIONS

|                     |                  |
|---------------------|------------------|
| Nominal Voltage     | <b>12 Volt</b>   |
| C100                | <b>231AH</b>     |
| C20                 | <b>210AH</b>     |
| C10                 | <b>189AH</b>     |
| C5                  | <b>172AH</b>     |
| CCA                 | <b>1180</b>      |
| CA or MCA           | <b>1425</b>      |
| HPCA                | <b>2000 Amps</b> |
| Internal Resistance | <b>2.3m Ω</b>    |

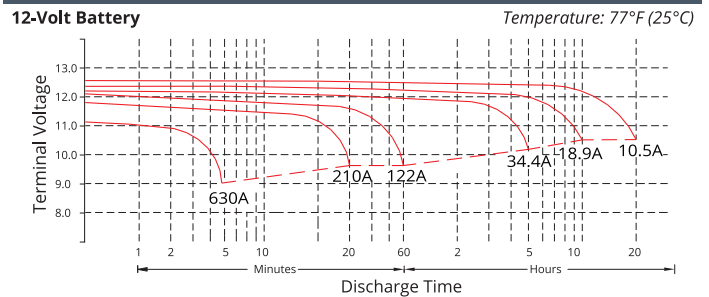
## MECHANICAL SPECIFICATIONS

|                      |  |                |
|----------------------|--|----------------|
| Group Size           | <b>4D</b>                                      |                |
| Terminal Type        | <b>L Terminal</b>                              |                |
| Terminal Torque      | <b>See reverse side</b>                        |                |
| Height (w/ terminal) | <b>9.41"</b>                                   | <b>239mm</b>   |
| Height (case only)   | <b>8.43"</b>                                   | <b>214mm</b>   |
| Width                | <b>8.23"</b>                                   | <b>209mm</b>   |
| Length               | <b>20.87"</b>                                  | <b>530mm</b>   |
| Weight               | <b>133.1 lbs</b>                               | <b>60.5 kg</b> |
| Case Type            | <b>ABS Plastic - Flame Res. Rating UL94-HB</b> |                |

## DISCHARGE TABLE (Constant Current)

| Time | Amps | Rate   |
|------|------|--------|
| 20hr | 10.5 | 0.05CA |
| 10hr | 18.9 | 0.10CA |
| 8hr  | 22.9 | 0.13CA |
| 5hr  | 33.3 | 0.25CA |
| 3hr  | 47.6 | 0.33CA |
| 2hr  | 64.3 | 0.50CA |
| 1hr  | 116  | 1.00CA |

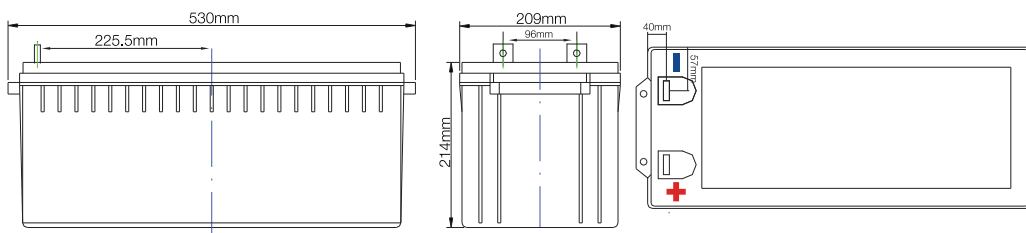
## DISCHARGE PROFILE (Constant Current)



- All listed ratings are @ 100% SoC, T=77°F (25°C), 1.75VPC unless otherwise specified.

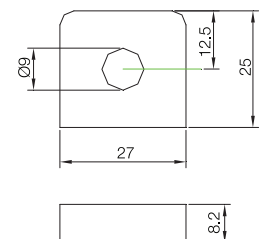
- Specifications listed are for estimation purposes only. Battery performance can vary depending on application. Battery design subject to change.

## BATTERY & TERMINAL DIMENSIONS (All units shown in mm)



Battery bank spacing required,  
12.5mm (1/2" inch) minimum

### Terminal: LT



(unit: mm)



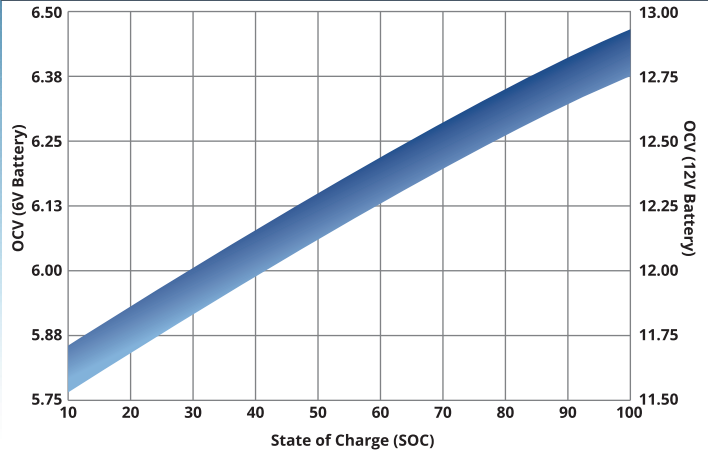
# DC210-12 DATA SHEET

fullriverbattery.com

## TEMPERATURE vs CAPACITY

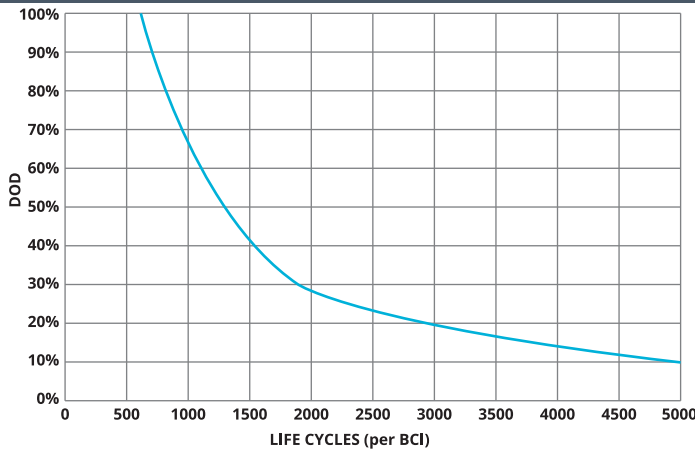


## STATE of CHARGE (SOC) vs OPEN CIRCUIT VOLTAGE (OCV)

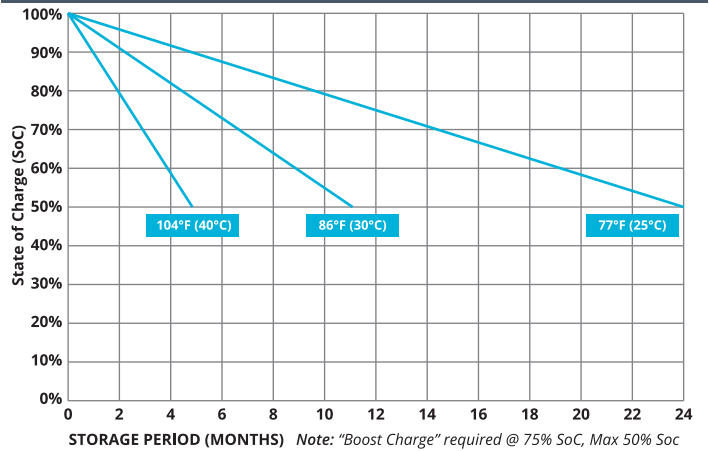


## CYCLE LIFE vs DEPTH of DISCHARGE (DOD)

\*(Based on BCI Testing @ 2-hr Rate)



## SELF DISCHARGE vs TIME/TEMPERATURE



## TEMPERATURE RANGE SPECIFICATIONS

| Condition      | Recommended   | Maximum        | Recommended   | Maximum       |
|----------------|---------------|----------------|---------------|---------------|
| Storage        | 5°F to 122°F  | -40°F to 160°F | -15°C to 50°C | -40°C to 71°C |
| Operation      | 5°F to 104°F  | -40°F to 160°F | -15°C to 40°C | -40°C to 71°C |
| Charge with TC | 5°F to 122°F  | -40°F to 160°F | -15°C to 50°C | -40°C to 71°C |
| Charge w/o TC  | 32°F to 104°F | 5°F to 122°F   | 0°C to 40°C   | -15°C to 50°C |

\*TC= Temperature Compensation

## CHARGE VOLTAGES

| Charge Stage | Battery Voltages |       |       |       |
|--------------|------------------|-------|-------|-------|
|              | 12V              | 24V   | 36V   | 48V   |
| Bulk         | 14.7V            | 29.4V | 44.1V | 58.8V |
| Absorption   | 14.7V            | 29.4V | 44.1V | 58.8V |
| Float        | 13.6V            | 27.2V | 40.8V | 54.6V |

TC Factor: (-2mV°F/cell) or (-4mV°C/cell)

## TERMINAL TORQUE SPECS

| Terminal Type                                     | ft-lbs     | in-lbs  | Nm         |
|---|------------|---------|------------|
| AP, DT (AP), M6, M6M (Stud), TP07 (AP), TP08 (AP) | 4.2 - 6.0  | 50-70   | 5.6 - 7.9  |
| FR45  | 6.0 - 7.5  | 70-90   | 7.9 - 10.1 |
| M8  | 7.1 - 8.0  | 85-95   | 9.6 - 10.7 |
| DT (Stud), M10M (Stud)                            | 9.2 - 10.4 | 110-125 | 12.2 - 14  |



9001:2008 Quality Management System  
 14001:2004 Environmental Management System  
 18001:2007 Occupational Health & Safety Management System



DELIVERY APPROVED!  
**LAND, SEA  
 & AIR**

Fullriver batteries are sealed lead acid batteries made with Absorbed Glass Mat (AGM) technology. The electrolyte is absorbed into the fiberglass separator material rather than in a free-flowing liquid form. Fullriver batteries are non-spillable electric storage batteries. They are excepted from the requirements of DOT's hazardous materials regulations, since they adhere to the requirements of code 49 CFR Section 173.159(D) - (CLASSIFIED APPROVED: DOT, CFR, HMR49, IATA, ICAO67, IMDG27)